

# USE OF AI FOR ILLUSTRATING FICTION

PARENGĖ: ROSITA VASILEVSKYTĖ 1C IR MIKALOJUS MILINKEVIČIUS 1E

DARBO VADOVAS: ANGLŲ KALBOS MOKYTOJA VAIGA STANEVIČIENĖ

The image features a dark blue background with technical diagrams, including circular gauges and arrows. On the left side, there is a cluster of light bulbs. One bulb in the center is illuminated, casting a bright glow, while the others are unlit. The title 'THE AIM' is written in a large, white, stylized font in the upper right quadrant.

# THE AIM

Find and test as many as possible universal and diverse artificial intelligence sites that understand human phrases well enough to illustrate selected works of fiction.

Surasti ir išbandyti kuo daugiau universalių bei neįprastų, žmogaus frazes gerai suprantančių dirbtinio intelekto svetainių ir iliustruoti pasirinktus grožinės literatūros kūrinius.

# EXPECTED RESULT

Finding the best artificial intelligence website to generate illustrations for selected works of fiction.

Suradus geriausią dirbtinio intelekto svetainę, sugeneruoti pasirinktų grožinės literatūros kūrinių iliustracijas.



# THE BOOKS WE ILLUSTRATED

The *Ranger's Apprentice* series follows Will, an orphan who becomes an apprentice to a mysterious Ranger named Halt. Throughout the books, Will learns the skills of a Ranger - stealth, archery, and combat—while facing various enemies, including the traitorous Morgarath, Skandian slavers, the nomadic Temujai, and corrupt cults. Alongside his friends Horace, a skilled knight, and Princess Cassandra, Will undertakes missions to protect the kingdom of Araluen and its allies. As he matures, Will faces personal challenges, such as overcoming addiction and grief, ultimately becoming a legendary Ranger himself while training the next generation.



The *Shining* by Stephen King is a horror novel about Jack Torrance, a man who takes a job as the winter caretaker of the isolated Overlook Hotel. He moves there with his wife, Wendy, and their psychic son, Danny, who can see the hotel's dark, supernatural history. As the hotel's evil forces influence Jack, he starts to lose his mind, threatening his family.

# ILLUSTRATED CHARACTERS

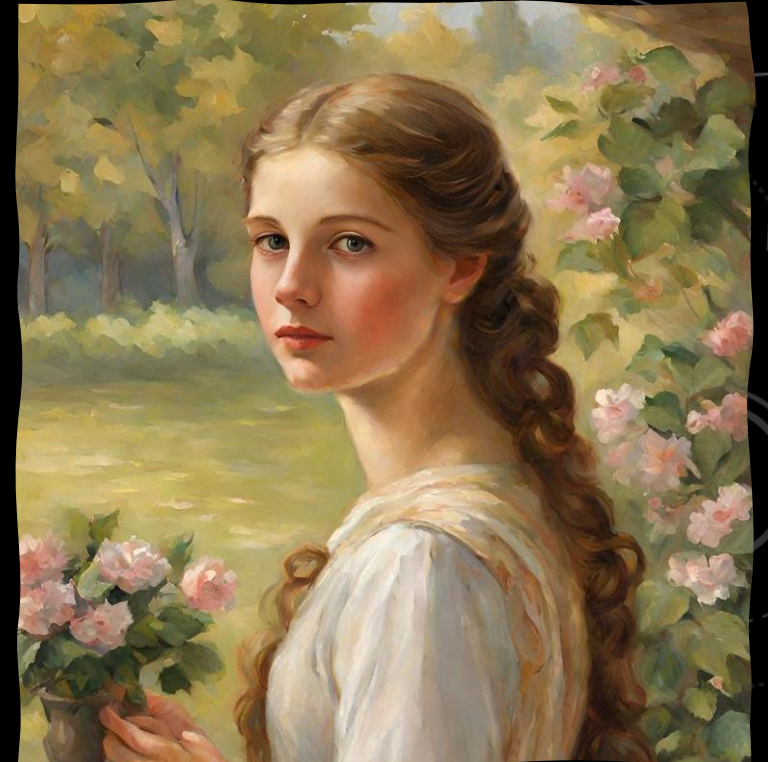
*Halt from John Flanagan's  
"Ranger's Apprentice"*



*Aiden from Ana Huang's  
"Twisted Lies"*



*Alice from John Flanagan's  
"Ranger's Apprentice"*



*Cristian from Ana Huang's  
"Twisted Lies"*



*Will from John Flanagan's  
"Ranger's Apprentice"*

*Stella from Ana Huang's  
"Twisted Lies"*



# ILLUSTRATED PLOT LINE





# FAILED ATTEMPTS



# CONCLUSIONS

Artificial intelligence does not understand unrealistic scenarios, very complicated words, has trouble generate a human neck and a specific clothes, struggles to make human facial expressions and depicting images of dead people and ghosts, cannot generate people with different hair and weapons, does not understand reinforcing adjectives and does not have human logic.

Dirbtinis intelektas nesupranta nerealistiškų scenarijų, labai komplikuotų žodžių, negali sugeneruoti žmogaus kaklo ir specifiniu rūbu, negali daryti žmonių veido išraiškų bei vaizduoti mirusių žmonių ir vaiduoklių atvaizdų, negali sugeneruoti skirtingus plaukus turinčių žmonių ir ginklų, nesupranta pastiprinamųjų būdvardžių ir neturi žmonėms būdingos logikos.

The background features a glowing blue brain in the center, surrounded by a dark blue field of circuit-like patterns and glowing points. Several circular elements with dashed lines and arrows are scattered around, some containing numerical values like 140, 150, 160, 170, 180, 190, 200, 210, 220, 230, 240, 250, and 260. A central black rectangle contains the text.

**THANKS FOR  
LISTENING**